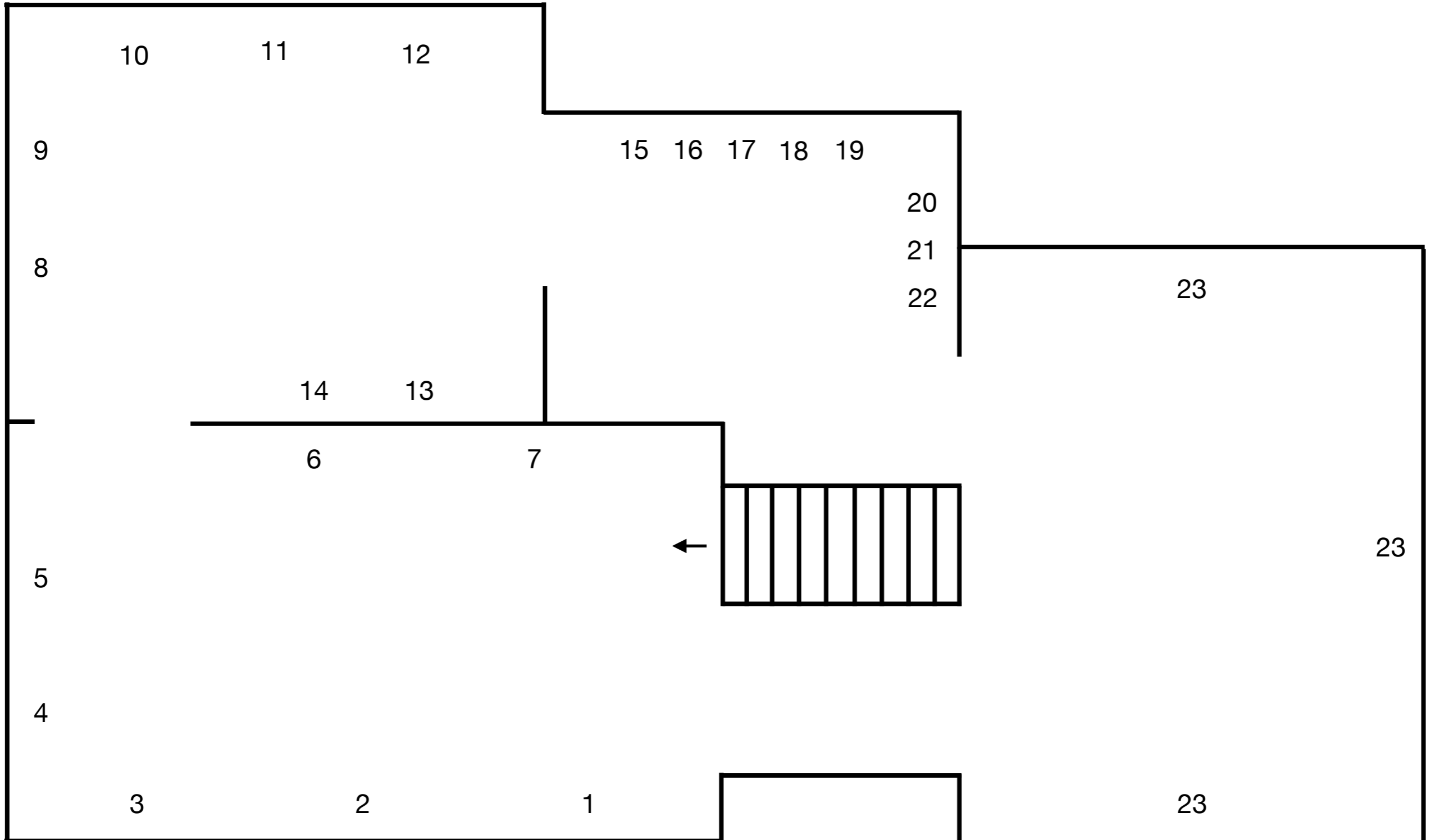


new
art
projects

Phantom Creeps

Pamela Golden

04 Sept - 29 Oct



You Know I've Been at Sea Before

Space 1

1. *Fathoms*, 1997
Oil and encaustic on paper, 4.3x8.4cm
2. *Made Left and Right*, 1997
Oil and encaustic on paper, 5.1x10.4cm
3. *Mattress Ticking*, 1997
Oil and encaustic on paper, 4.6x5.6cm
4. *Waves*, 1997
Oil and encaustic on paper, 4.1x7.9cm
5. *Pearly Gate*, 1997
Oil and encaustic on paper, 5.3x7.6cm
6. *Second Dog*, 1997
Oil and encaustic on paper, 4.3x3.3cm
7. *For Charles Darwin*, 1997
Oil and encaustic on paper, 5.6x3.6cm

Paris Properties — Phantom Creeps

Space 4

23. *Paris Properties — Phantom Creeps*
Dimensions variable, 2022

Auctions

Space 2

8. *Untitled Auction (Cassatt)*, 1990
Oil and encaustic on paper, 9x6cm
9. *Untitled Auction (Ryman)*, 1990
Oil and encaustic on paper, 9.25x6cm
10. *Pablo Picasso's 'Femme au fauteuil' auctioned at Christie's in London*, 2015
Oil and encaustic on paper, 4.2x5.6cm
11. *Bacon and Motherwell, Sotheby's auctioned by Tobias Meyer*, 2015
Oil and encaustic on paper, 3x5.2cm
12. *Rothko and Johns, Sotheby's auctioned by Oliver Barker*, 2015
Oil and encaustic on paper, 10.4x9.8cm
13. *The Winning Bid*, 1992
Oil and encaustic on paper, 40.6x40.6cm
14. *Charles Allsopp auctioning Pablo Picasso's 'Femme Assise dans un Fauteuil' sold at Christie's*, 1996
Oil and encaustic on paper, 4.3x3.8cm

Night Flowers

Space 3

15. *Scabiosa caucasica, 'Pin Cushion Flower'*, 2017
Sumi ink on sandpaper, 28x23cm
16. *Echinocactus pilosus*, 2017
Sumi ink on sandpaper, 28x23cm
17. *Sanguinaria canadensis, from blood*, 2017
Sumi ink on sandpaper, 28x23cm
18. *Eranthus hyemalis*, 2017
Sumi ink on sandpaper, 28x23cm
19. *Scabiosa caucasica, 'Pin Cushion Flower'*, 2017
Sumi ink on sandpaper, 28x23cm
20. *Heliopsis scapra zinniaflora*, 2017
Sumi ink on sandpaper, 28x23cm
21. *Clematis langmosa*, 2017
Sumi ink on sandpaper, 28x23cm
22. *Scarracenia flava, 'Pitcher Plant'*, 2017
Sumi ink on sandpaper, 10.4x9.8cm

Pamela Golden

Phantom Creeps - Paris Properties

1 - 55. 144 x 318 cm

1. Paris 75003. 863 000 euros. 2006/7, 12.5 x 9 cm, watercolour on paper, 2022
2. Charonne 656 000 euros. 2006/7, 10 x 7 cm, watercolour on paper, 2022
3. 5e Pantheon 615 000 euros. 2006/7, 9 x 5 cm, watercolour on paper, 2022
4. Place Edith Piaf 110 000 euros. 2006/7, 5 x 5 cm, watercolour on paper, 2022
5. 11e Charonne 185 000 euros. 2006/7, 9 x 6 cm, watercolour on paper, 2022
6. Bagnolet Limite Les Lilas 485 000 euros. 2006/7, 6.5 x 8.25 cm, watercolour on paper, 2022
7. Levallois-Perret 165 000 euros. 2006/7, 12.5 x 8 cm, watercolour on paper, 2022
8. 19e Entre Parc Des Buttes Chaumont Ex 260 000 euros. 2006/7, 7 x 6 cm, watercolour on paper, 2022
9. 2/3 Pieces -Vue Panoramique 620 000 euros, 2006/7, 7 x 5 cm, watercolour on paper, 2022
10. Bastille 585 000 euros. 2006/7, 12 x 9 cm, watercolour on paper, 2022
11. Boulogne-Billancourt 470 000 euros. 2006/7, 9 x 9 cm, watercolour on paper, 2022
12. Boulogne-Billancourt Route de la Reine 347 000 euros. 2006/7, 9 x 6 cm, watercolour on paper, 2022
13. Atelier D' Artist XV 370 000 euros. 2006/7, 3.5 x 5 cm, watercolour on paper, 2022
14. 16e La Muerre 445 000 euros. 2006/7, 8 x 6 cm, watercolour on paper, 2022
15. 9eme-Vue Sacre Coeur 1 595 000 euros. 2006/7, 11 x 8 cm, watercolour on paper, 2022
16. Le Croisie Cote Sauvage. 520 000 euros. 2006/7, 8 x 6 cm, watercolour on paper, 2022
17. Charenton-Le-Pont 'Loft' Terrasse Parking 147 000 euros. 2006/7, 10 x 8 cm, watercolour on paper, 2022
18. Paris 75020 Saint-Fargeau 215 000. euros. 2006/7, 8 x 7.5 cm, watercolour on paper, 2022
19. Paris 12e Bastille/Gare de Lyon 300 000 euros. 2006/7, 9 x 5 cm, watercolour on paper, 2022
20. Place Des Trois Bornes/Timbaud 365 000 euros. 2006/7, 7 x 6 cm, watercolour on paper, 2022
21. Plein Couer du Marais-Prox Place des Vosges 686 000 euros. 2006/7, 8 x 5.5 cm, watercolour on paper, 2022
22. Paris 11e Bastille-Belle demeure 408 500 euros. 2006/7, 9 x 6 cm, watercolour on paper, 2022
23. Creteil Georges Duchamel 220 000 euros. 2006/7, 7.5 x 5 cm, watercolour on paper, 2022
24. SIP 01 43 705756 475 000 euros. 2006/7, 10.5 x 9 cm, watercolour on paper, 2022
25. Paris 75014. 2006/7, 9 x 6 cm, watercolour on paper, 2022
26. Proximite' Republique. 840 000 euros. 2006/7, 8 x 6.5 cm, watercolour on paper, 2022
27. Paris 12e Bastille 850 000 euros. 2006/7, 7 x 6.5 cm, watercolour on paper, 2022
28. 11 e'me Av. De la Republique. 652 000 euros. 2006/7, 9 x 7.5 cm, watercolour on paper, 2022
29. 17e Courelles 704 000 euros. 2006/7, 7 x 6.5 cm watercolour on paper, 2022
30. Paris 75015 850 000 euros. 2006/7, 7x7.5cm, watercolour on paper, 2022
31. Paris 3e Marais- Vielle du Temple 1 270 000 euros. 2006/7, 8 x 7 h cm, watercolour on paper, 2022
32. Exclusivite' Paris 75010 1 150 000 euros. 2006/7, 9 x 7cm, watercolour on paper, 2022
33. 9e Entre Blanche et Trinite 385 000 euros. 2006/7, 9 x 7 cm, watercolour on paper, 2022
34. Paris 16e 560 000 euros. 2006/7, 7.5 x 7.5cm, watercolour on paper, 2022
35. Luxembourg/Gay Lussac 1 580 000 euros. 2006/7, 9.5 x 6 cm, watercolour on paper, 2022
36. 12e Gare de Lyon/Ledru Rollin 328 000 euros. 2006/7, 7 x 7 cm, watercolour on paper, 2022
37. 7e Rue de Bourgogne 215 000 euros. 2006/7, 11 x 8.5 cm, watercolour on paper, 2022
38. Beuborg 860 000 euros. 2006/7, 7 x 4.5 cm, watercolour on paper, 2022
39. 8 Pieces 1 500 000 euros. 2006/7, 7 x 3.5 cm, watercolour on paper, 2022
40. 4e Tournelles/Vosages 1 750 000 euros. 2006/7, 11.5 x 8 cm, watercolour on paper, 2022
41. 17 eme Porte Champerret 215 000 euros. 7.5 x 7.5 cm, watercolour on paper, 2022
42. Paris 11e Rue Montorguell 252 000 euros. 2006/7, 7 w x 5.5 cm, watercolour on paper, 2022
43. Paris 1er Louvres 328 000 euros. 2006/7, 9 w x 7.5 cm, watercolour on paper, 2022
44. Ivry Sur Seine 510 000 euros. 2006/7, 9.5 w x 6.5 cm, watercolour on paper, 2022
45. Paris xe Rue Faubourg St Martin 790 000 euros. 2006/7, 7 x 5.5 cm, watercolour on paper, 2022
46. Exclusivite' 1 000 000 euros. 2006/7, 7.5 x 6 cm, watercolour on paper, 2022
47. Paris 75015 685 000 euros. 2006/7, 8 x 6 cm, watercolour on paper, 2022
48. Rue de Seine 972 000 euros. 2006/7, 7 x 6 cm, watercolour on paper, 2022
49. 13 eme Superbe duplex pieces 1 680 000 euros. 2006/7, 6 x 4 cm, watercolour on paper, 2022
50. Paris 9e Grand Boulevard 715 000 euros. 2006/7, 9.5 w x 9.5 cm, watercolour on paper, 2022
51. Le Pre-Saint Gervais Villa Du Pie 498 000 euros. 2006/7, 7.5 x 6 cm, watercolour on paper, 2022
52. Dans immeubles XVlle 550. 000 euros. 2006/7, 6 x 5 cm, watercolour on paper, 2002
53. Dans immeubles erepi 2 pieces de 35m 2 entierement refaits sejour coin cuisine, chamber, salle d'eau avec w.c.
A voir. 239 000 euros. 2006/7, 8 x 6 cm, watercolour on paper, 2022
54. Rue Des Petits Carreaux 230 000 euros. 2006/7, 8 x 6 cm, watercolour on paper, 2022
55. Paris 1er, 2e-4,4 483 000 euros. 2006/7, 12 x 9.5 cm, watercolour on paper, 2022

→ Left to Right

1	2	3	4	5	6	7	8	9	10	11
12	13	14	15	16	17	18	19	20	21	22
23	24	25	26	27	28	29	30	31	32	33
34	35	36	37	38	39	40	41	42	43	44
45	46	47	48	49	50	51	52	53	54	55

Pamela Golden

Phantom Creeps - Paris Properties

56 - 135. 144 x 466 cm

- 56. Exclusivite-Paris IVE-Saint Paul 440 000 euros 2006/7, 9 x 7 cm, watercolour on paper, 2022
- 57. Menilmontaut 678 000 euros. 2006/7, 11 x 6.5 cm, watercolour on paper, 2022
- 58. Coup de Coeur Musee Picasso 2 050 000 euros. 2006/7, 4.5 w x 6 h cm, watercolour on paper, 2022
- 59. Paris 95014. 370 000 euros. 2006/7, 9.5 w x 7 h cm, watercolour on paper, 2022
- 60. 12E Porte de Vincennes 245 000 euros. 2006/7, 7.5 x 6.5 cm, watercolour on paper, 2022
- 61. Paris 11eme Proche Rue Saint Maur-Faubourg du Temple 600 000 euros. 2006/7, 9 x 7.5 cm, watercolour on paper, 2022
- 62. Exclusivite-12e Porte de Vincennes 678 000 euros. 2006/7, 8.5 x 5.5 cm, watercolour on paper, 2022
- 63. Paris 9 eme Metro Cadet 970 000 euros. 2006/7, 9 x 6.5 cm, watercolour on paper, 2022
- 64. Paris 20e Saint Blaise 408 000 euros. 2006/7, 7.5 x 8 cm, watercolour on paper, 2022
- 65. Paris 20e Place Edith Piaf 210 000 euros. 2006/7, 5.5 x 10.5 cm, watercolour on paper, 2022
- 66. 11 eme Bastille Le charme du 17 eme siècle 780 000 euros. 2006/7, 9.5 x 8 cm, watercolour on paper, 2022
- 67. Paris 75015 686 000 euros. 2006/7, 7 x 6.5 cm, watercolour on paper, 2022
- 68. Trocadero 345 000 euros. 2006/7, 10 x 6 cm, watercolour on paper, 2022
- 69. 7 eme carre' des Antiquaires 624 000 euros. 2006/7, 9 x 6 cm, watercolour on paper, 2022
- 70. 16e Foch 973 000 euros. 2006/7, 9 x 7 cm, watercolour on paper, 2022
- 71. Ille Filles Du-Calvaire 535 000 euros. 2006/7, 7.5 x 5.5 cm, watercolour on paper, 2022
- 72. 2 Pieces Canal Saint-Martin 468 000 euros. 2006/7, 7 x 6 cm, watercolour on paper, 2022
- 73. Paris 75014 2007/7, 7 x 6.5 cm, watercolour on paper, 2022
- 74. Paris 75011 560 000 euros. 2006/7, 8 x 5.5 cm, watercolour on paper, 2022
- 75. Paris 10e Canal Saint-Martin a proximite' de l'hotel du Nord 750 000 euros. 2006/7, 6 x 4 cm, watercolour on paper, 2022
- 76. 20e Entre Jourdain/Telegraphe 210 000 euros. 2006/7, 10 x 11 cm, watercolour on paper, 2022
- 77. 11e Republique/ St Maur 416 000 euros. 2006/7, 7 x 4 cm, watercolour on paper, 2022
- 78. 5 Pieces XVlle 435 000 euros. 2006/7, 7 x 8 cm, watercolour on paper, 2022
- 79. 10e Tre proche 9e 300 000 euros. 2006/7 8 w x 5 h cm watercolour on paper, 2022
- 80. Saint-Quen Limite Paris 538 000 euros. 2006/7, 7.5 x 7 cm, watercolour on paper, 2022
- 81. A Deux Pas de Garibaldi 165 000 euros. 2006/7, 7 x 5 cm, watercolour on paper, 2022
- 82. ILE Bourse 410 000 euros. 2006/7, 8 x 5 cm, watercolour on paper, 2022
- 83. 16e Foch 1 050 000 euros. 2006/7, 6.5 x 5 cm, watercolour on paper, 2022
- 84. Neuilly 280 000 euros. 2006/7, 7 x 6 cm, watercolour on paper, 2022
- 85. La Celle St. Cloud 165 000 euros. 2006/7, 6.5 x 7.5 cm, watercolour on paper, 2022
- 86. Courbevoie Becon les bruyeves 259 000 euros. 2006/7, 9.5 x 7 cm, watercolour on paper, 2022
- 87. Vauvenargues 20 000 euros, 2006/7, 8 x 5.5 cm, watercolour on paper, 2022
- 88. Rome Villiers 325 000 euros. 2006/7, 6 x 5 cm, watercolour on paper, 2022
- 89. Porte Pouchet 116 578 euros. 2006/7, 7 x 4.5 cm, watercolour on paper, 2022
- 90. 17e- Wagram 299 000 euros. 2006/7, 9 x 5.5 cm, watercolour on paper, 2022
- 91. 8e Miromesnil 4 100 000 euros. 2006/7, 5.5 x 5 cm, watercolour on paper, 2022
- 92. Menilmontant 153 671 euros. 2006/7, 8 x 6 cm, watercolour on paper, 2022
- 93. Pelleport 246 000 euros, 2006/7, 6.5 x 5 cm, watercolour on paper, 2022
- 94. 12e Daumesnil. 635 000 euros. 2006/7, 9.5 x 6.5 cm, watercolour on paper, 2022
- 95. 4e Froncois' Miron/Rivoli 508 000 euros. 2006/7, 4 x 5.5 cm, watercolour on paper, 2022
- 96. Porte St. Martin 305 000 euros. 2006/7, 6.5 x 6 cm, watercolour on paper, 2022
- 97. Gare de L'Est 446 250 euros. 2006/7, 5.5 x 5.5 cm, watercolour on paper, 2022
- 98. Place Turgot 538 000 euros. 2006/7, 6 x 6 cm, watercolour on paper, 2022
- 99. 18e Custine/Ramey 399 000 euros. 2006/7, 12.5 x 6.5 cm, watercolour on paper, 2022
- 100. 10e Republique 424 000 euros. 2006/7, 11.5 x 5 cm, watercolour on paper, 2022
- 101. Louis Le Blanc 820 000 euros. 2006/7, 5 x 4.5 cm, watercolour on paper, 2022
- 102. Paris 75004 Archives 530 000 euros. 2006/7, 11 x 8.5 cm, watercolour on paper, 2022
- 103. Paris 75011 Metro Phillippe Auguste 299 000 euros. 2006/7, 6 x 8 cm, watercolour on paper, 2022
- 104. Paris 75009 La Brugere St Georges 750 000 euros. 2006/7, 5.5 x 6 cm, watercolour on paper, 2022
- 105. Paris 75013 Arago 298 000 euros. 2006/7, 7 x 9 cm, watercolour on paper, 2022
- 106. Paris 75008 St. Augustin 325 000 euros. 2006/7, 8.5 x 6.5 cm, watercolour on paper, 2022
- 107. Paris 75014 Parc Montsouris 298 000 euros. 2006/7, 5 x 4 cm, watercolour on paper, 2022
- 108. Parmentier Goncourt 381 000 euros. 2006/7, 7 x 5.5 cm, watercolour on paper, 2022
- 109. 4e Tournelles/Vosges 436 000 euros. 2006/7, 7.5 x 6 cm, watercolour on paper, 2022
- 110. 19e Buttes Chaumont 390 000 euros. 2006/7, 4.5 w x 7 cm, watercolour on paper, 2022

→ Left to Right

56	57	58	59	60	61	62	63	64	65	66	67	68	69	70	71
72	73	74	75	76	77	78	79	80	81	82	83	84	85	86	87
88	89	90	91	92	93	94	95	96	97	98	99	100	101	102	103
104	105	106	107	108	109	110	111	112	113	114	115	116	117	118	119
120	121	122	123	124	125	126	127	128	129	130	131	132	133	134	135

- 111. M' Grands Boulevards 620 000 euros. 2006/7, 6.5 x 4.5 cm watercolour on paper, 2022
- 112. Porte St Denis 357 000 euros. 2006/7, 7.5 x 7 cm watercolour on paper, 2022
- 113. Paris 19e 290 000 euros. 2006/7, 8.5 x 4.5 cm, watercolour on paper, 2022
- 114. prox. Moulin Rouge 365 000 euros. 2006/7, 7 x 6.5 cm, watercolour on paper, 2022
- 115. Buttes-Chaumont 430 000 euros. 2006/7, 8 x 8.5 cm, watercolour on paper, 2022
- 116. 9e Saint-Georges 403 000 euros. 2006/7, 11 x 10.5 cm, watercolour on paper, 2022
- 117. 3e Marais Proche Place Des Vosges 500 000 euros. 10 x 6 cm, watercolour on paper, 2022
- 118. 1er Palais Royal 460 000 euros. 2006/7, 6.5 x 5 cm, watercolour on paper, 2022
- 119. 2e Entre Place des Victoires er St. Eustache 499 000 euros. 2006/7, 7.5 x 9 cm, watercolour on paper, 2022
- 120. 3e Etienne Marcel 688 000 euros. 2006/7, 7 x 6 cm, watercolour on paper, 2022
- 121. Paris 75003 500 000 euros. 2006/7, 8 x 6 cm, watercolour on paper, 2022
- 122. 8e Paris 75008 580 000 euros. 2006/7, 7.5 x 7 cm, watercolour on paper, 2022
- 123. 3e Temple 615 000 euros. 2006/7, 9 x 7.5 cm, watercolour on paper, 2022
- 124. 4e Charles V 228 000 euros. 2006/7, 9 x 6.5 cm, watercolour on paper, 2022
- 125. 2e Rue de la Lune 460 000 euros. 2006/7, 7.5 x 6.5 cm, watercolour on paper, 2022
- 126. 20e Campagne a Paris 430 000 euros. 2006/7, 9 x 5 cm, watercolour on paper, 2022
- 127. Bry. Sur Marne Centre 205 000 euros. 2006/7, 8 x 8.5 cm, watercolour on paper, 2022
- 128. 3e Froissart 650 000 euros. 2006/7, 8.5 x 8 cm, watercolour on paper, 2022
- 129. Strasbourg Saint Denis 235 000 euros. 2006/7, 6 x 4 cm, watercolour on paper, 2022
- 130. Goncourt 340 000 euros. 2006/7, 7.5 x 6.5 cm, watercolour on paper, 2022
- 131. Ledru Rollin 420 000 euros. 2006/7, 7 x 8 cm, watercolour on paper, 2022
- 132. Chateau D'Eau 243 000 euros. 2006/7, 4 x 5 cm, watercolour on paper, 2022

- 133. Rue Tiquetonne 389 000 euros. 2006/7, 6 x 9 cm watercolour on paper, 2022
- 134. Paris 9e Imm. Haussm. 515 000 euros. 2006/7, 8 x 7.5 cm watercolour on paper, 2022
- 135. Paris 17e 350 000 euros. 2006/7, 8.5 x 5.5 cm watercolour on paper, 2022

Pamela Golden

Phantom Creeps - Paris Properties

136 - 200. 144 x 381 cm

- 136. Paris 8 Prox. Place Beauvau 340 000 euros. 2006/7, 4 x 5 cm, watercolour on paper, 2022
- 137. Lol Robien 569 000 euros. 2006/7, 8 x 7 cm, watercolour on paper, 2022
- 138. 5e Notre Dame/St Michel. 910 000 euros. 2006/7, 7.5 x 5.5 cm, watercolour on paper
- 139. 16e Kleber 1 730 000 euros. 2006/7, 4.5 x 5.5 cm, watercolour on paper, 2022
- 140. 15e Av de Breteuil 330 000 euros 2006/7, 9 x 8 cm, watercolour on paper, 2022
- 141. Suchet 856 000 euros. 2006/7, 8.5 x 6 cm, watercolour on paper, 2022
- 142. Parc Monceau 984 000 euros. 2006/7, 9 x 7 cm, watercolour on paper, 2022
- 143. Rue Edouard de Taille 732 000 euros. 2006/7, 8 x 6.5 cm, watercolour on paper, 2022
- 144. 17e Villiers-Rue de Saussaure 300 000 euros. 2006/7, 11 x 6.5 cm, watercolour on paper, 2022
- 145. 17e Ternes/Porte Maillot 650 000 euros. 2006/7, 9 x 6 cm, watercolour on paper, 2022
- 146. 11e Voltaire 350 000 euros. 2006/7, 5 x 5 cm, watercolour on paper, 2022
- 147. 12e Reilly-Diderot 425 000 euros. 2006/7, 5.5 x 5 cm, watercolour on paper, 2022
- 148. Paris 20 eme Place Edith Piaf 275 000 euros. 2006/7, 6 x 6 cm, watercolour on paper, 2022
- 149. Paris IIE Montorgueil 795 000 euros. 2006/7, 10 x 8.5 cm, watercolour on paper, 2022
- 150. 12e Rendez-vous 325 000 euros. 2006/7, 9.5 x 10 cm, watercolour on paper, 2022
- 151. Nation Villa de St- Mand. 295 000 euros. 2006/7, 6 x 6 cm, watercolour on paper, 2022
- 152. Prox. Ecol St. Michel-Nation 780 000 euros. 2006/7, 6.6 x 4.5 cm, watercolour on paper, 2022
- 153. 11e Goncourt/Timbaud 456 000 euros. 2006/7, 12.5 x 9.5 cm, watercolour on paper, 2022
- 154. 12e Daumesnil 184 000 euros. 2006/7, 12.5 x 9.5 cm, watercolour on paper, 2022
- 155. 16e Victor Hugo/Trocadero 564 000 euros. 2006/7, 6 x 5.5 cm, watercolour on paper, 2022
- 156. 16e Etoile/Victor Hugo 2 200 000 euros. 2006/7, 6.5 x 6 cm, watercolour on paper, 2022
- 157. 17e Porte Maillot 724 000 euros. 2006/7, 7.5 x 6 cm, watercolour on paper, 2022
- 158. 15 e me-Exelmans 1 295 000 euros. 2006/7, 5 x 7 cm, watercolour on paper, 2022
- 159. Neuilly Sur Seine 787 000 euros. 2006/7, 7.5 x 5 cm, watercolour on paper, 2022
- 160. 17 eme Batignolles 730 000 euros. 2006/7, 6.5 x 4.5 cm, watercolour on paper, 2022
- 161. Montorgueil 368 000 euros. 2006/7, 8 x 6.5 cm, watercolour on paper, 2022
- 162. 4e Tournells/Vosges 971 000 euros. 2006/7, 10 x 7.5 cm, watercolour on paper, 2022
- 163. 3e Marais/Picasso 1 320 000 euros. 2006/7, 6 x 5.5 cm, watercolour on paper, 2022
- 164. Paris 75012 A 2 pas de la Place Felix Ebove' 680 000 euros. 2006/7, 7.5 x 5.5 cm, watercolour on paper, 2022
- 165. Paris 10e Canal Saint-Martin 792 000 euros. 2006/7, 8 x 7 cm, watercolour on paper, 2022
- 166. 3e Marais/Temple 458 000 euros. 2006/7, 8 x 6.5 cm, watercolour on paper, 2022
- 167. Paris 10e Metro Colonel Fabien 637 000 euros. 2006/7 12.5, x 8.5 cm, watercolour on paper, 2022
- 168. Paris 12e 518 000 euros. 2006/7, 6.5 x 6 cm, watercolour on paper, 2022
- 169. A 3' Du Metro St. Mande RER 8 210 000 euros. 2006/7, 7 x 6 cm, watercolour on paper, 2022
- 170. Au Pre St-Gervais Site Protégé 2 Pas Paris 427 000 euros. 2006/7, 8 x 6.5 cm, watercolour on paper, 2022
- 171. Paris 19e Simon Bolivar 485 000 euros. 2006/7, 8.5 w x 6.5 cm, watercolour on paper, 2022
- 172. Paris 20e Proche Jourdain 390 350 euros. 2006/7, 8.5 x 7 cm, watercolour on paper, 2022
- 173. Paris 12e Metro Dugommier 895 000 euros. 2006/7, 8.5 x 6 cm, watercolour on paper, 2022
- 174. Paris 12 Michel Bizot 365 000 euros. 2006/7, 6 x 5 cm, watercolour on paper, 2022
- 175. Quartier Residential St. Mande 290 000 euros. 2006/7, 7 x 7 cm, watercolour on paper, 2022
- 176. 13e Quartier Daumesnil 190 800 euros. 2006/7, 7.5 x 6 cm, watercolour on paper, 2022
- 177. 12e Avenue St. Mande Nation 440 000 euros. 2006/7, 5.5 x 8 cm, watercolour on paper, 2022
- 178. Jacques Bonsergent 127 000 euros. 2006/7, 9.5 x 7 cm, watercolour on paper, 2022
- 179. 12e Nation 385 000 euros. 2006/7, 7 x 7 cm, watercolour on paper, 2022
- 180. Vincennes Proche Mairie. 290 000 euros. 2006/7, 6.5 x 6 cm, watercolour on paper, 2022
- 181. Paris 9e 1 070 000 euros. 2006/7, 7 x 6 cm, watercolour on paper, 2022
- 182 11e Avenue de la Republique 1 020 000 euros. 2006/7, 6.5 x 8.5 cm, watercolour on paper, 2022
- 183. Ile Turbigo 897 000 euros. 2006/7, 7 x 7 cm, watercolour on paper, 2022
- 184. Muette 437 000 euros. 2006/7, 8 x 8 cm, watercolour on paper, 2022
- 185. 5e Place Monge 435 000 euros. 2006/7, 8 x 6 cm, watercolour on paper, 2022
- 186. 20e Metro Gambetta 235 000 euros. 2006/7, 6 x 9 cm, watercolour on paper, 2022
- 187. Place de Bastille 575 000 euros. 2006/7, 6.5 x 6 cm, watercolour on paper, 2022
- 188. Paris 11e Metro Bastille 378 000 euros. 2006/7, 8.5 x 6.5 cm, watercolour on paper, 2002
- 189. Alexandre Dumas 145 000 euros. 2006/7, 7 x 5.5 cm, watercolour on paper, 2022
- 190. Montparnasse 437 000 euros. 2006/7, 5 x 7.5 cm, watercolour on paper, 2022

→ Left to Right

136	137	138	139	140	141	142	143	144	145	146	147	148
149	150	151	152	153	154	155	156	157	158	159	160	161
162	163	164	165	166	167	168	169	170	171	172	173	174
175	176	177	178	179	180	181	182	183	184	185	186	187
188	189	190	191	192	193	194	195	196	197	198	199	200

- 191. 14 eme' Alesia 10. Dot 215 000 euros. 5.5 x 5.5 cm, watercolour on paper, 2022
- 192. 12 eme Ledru-Rollin 99 000 euros. 2006/7, 5.5 x 3.5 cm, watercolour on paper, 2022
- 193. 12 eme Quartier Dugommier 335 000 euros. 2006/7, 8 x 5.5 cm, watercolour on paper, 2022
- 194. 6 eme vue Tour Eiffel 990 000 euros. 2006/7, 7.5 x 7 cm, watercolour on paper, 2022
- 195. 16e Place de Colonbie Pres Ranelagh 798 000 euros. 2006/7, 7.5 x 5 cm, watercolour on paper, 2022
- 196. Paris 75008 St. Augustin 1 400 000 euros. 2006/7, 7.5 x 4.5 cm, watercolour on paper, 2022
- 197. XIE Amelot 756 000 euros. 2006/7, 7.5 x 7 cm, watercolour on paper, 2022
- 198. Rue D' Aboukir 430 000 euros. 2006/7, 7.5 x 6 cm, watercolour on paper, 2022
- 199. 8 eme Parc Monceau Vue Exceptionelle. 1548 000 euros. 2006/7, 7.5 x 7 cm, watercolour on paper, 2022
- 200. St. Dominique 1 020 000 euros. 2006/7, 7 x 7.5 cm, watercolour on paper, 2022